

Cut out model  
Score base and middle lines



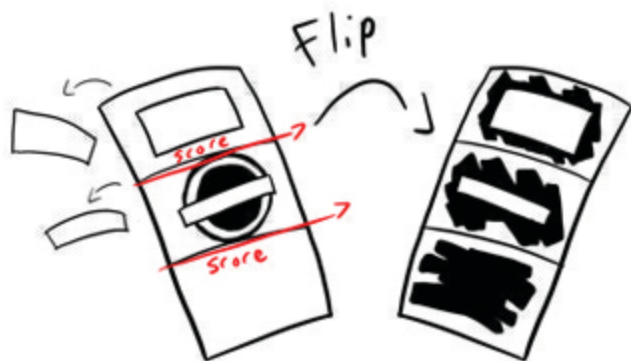
"Sandwich" glue  
front & back together  
Do NOT get glue on tabs



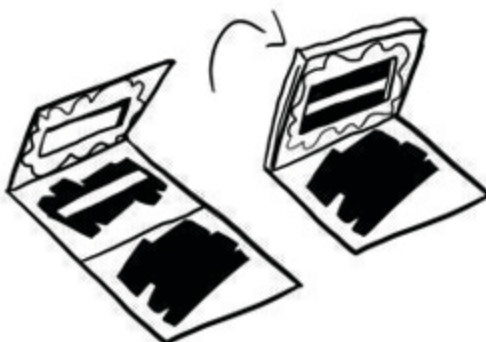
Trim excess border  
Fold base tabs perpendicular  
to the model



Edge with a  
black marker



Cut out slots  
Turn over, use a black marker  
to edge slots and lay down a  
solid black patch on bottom segment



Glue and fold inner flap  
Avoid getting glue in the slot



For extra thickness  
glue base to cereal cardboard



Cut out the disc  
Edge with a black mark